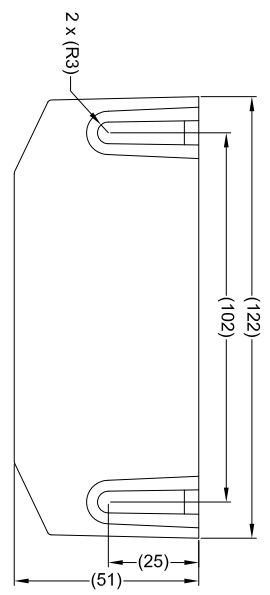
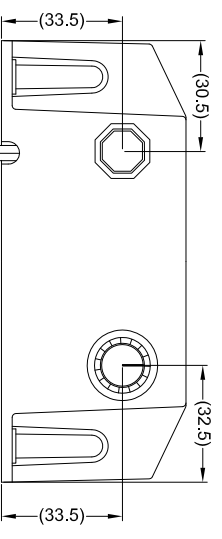
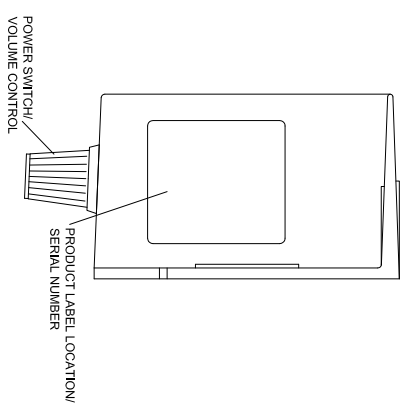
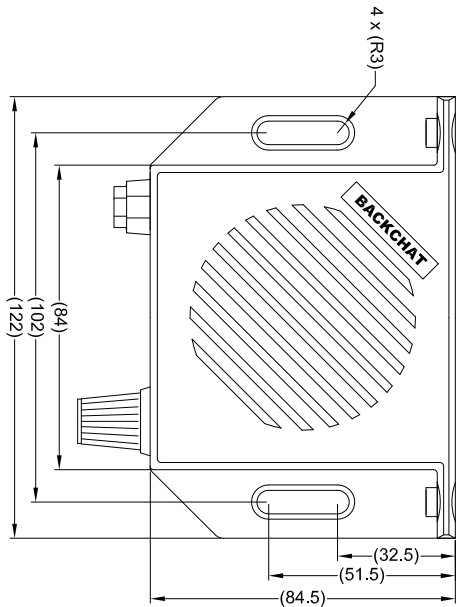
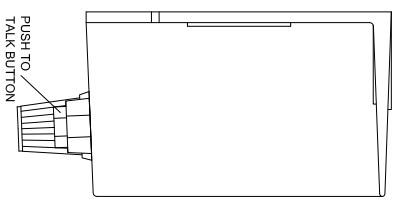
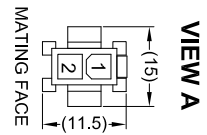


Revision Notes:		
Checked By: -	Approved By: -	Date Released: -

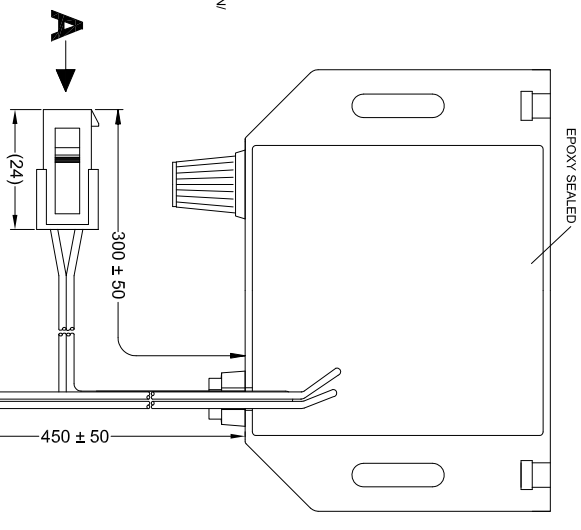


PIN #	WIRE COLOUR	DESCRIPTION
1	WHITE	SPEAKER SIGNAL
2	BLACK TRACE	SPEAKER SIGNAL



SPECIFICATION
 RATED VOLTAGE: 12 AND 24 VOLTS DIRECT CURRENT (WORKING VOLTAGE RANGE: 10 THRU 30 VOLTS)
 RATED CURRENT: 1.0 AMPERES OR LESS
 SOUND PRESSURE: MAX 90±4 DECIBELS AT TEST VOLTAGE OF 14 AND 28 VOLTS
 CABLE THICKNESS: POWER CABLES 240±2MM
 INTERCOM CABLE 130±2MM IN FIGURE OF 8 CONSTRUCTION
 INTERCOM CABLE INSULATION MUST BE FULLY POTTED AT POINT OF CONNECTION TO PCB.

OPERATION
 MASTER IS ALWAYS LISTENING TO SLAVE UNLESS THE PUSH TO TALK BUTTON IS PRESSED UPON WHICH THE MASTER WILL TRANSMIT TO THE SLAVE
 UNIT IS SWITCHED ON BY ROTATING THE CONTROL KNOB CLOCKWISE IT CAN THEN BE FURTHER ROTATED TO ADJUST VOLUME



- NOTES:**
1. DIMENSIONS IN MM.
 2. MATERIAL: ABS PLASTIC - ULTRA VIOLET STABILIZED.
 3. FINISH: BLACK.
 4. FOR PRODUCT LABEL, REFER TO BE-001402-00-11.
 5. 2 X M6 X 25 BOLTS, 2 X M6 FLAT WASHER & 2 X M6 NUTS ARE SUPPLIED IN A PRESS SEAL BAG IN THE BOX.
 6. POWER & INTERCOM CABLE LENGTH ARE MEASURED FROM CABLE ENTRY POINT ON HOUSING.

PROPRIETARY NOTICE
 THIS DESIGN AND TECHNICAL INFORMATION APPEARING ON THIS DRAWING IS THE PROPERTY OF BRIGADE ELECTRONICS, AND IS DISCLOSED IN CONFIDENCE. IT IS NOT TO BE COPIED, REPRODUCED, REVEALED TO OR EXPLOITED BY OTHERS, EITHER IN WHOLE OR IN PART WITHOUT THE EXPRESS WRITTEN CONSENT OF BRIGADE ELECTRONICS.



Angle of Projection Third Angle	Assembly PI Approval		Approved by		Checked by		Drawn by	
	A/HEDLE		DKERALI		JNEWMAN		M BUTLER	
Status		Scale		Released		Assembly Ref		
RELEASED		N/A		13/10/11		A1099_ONE		
Stock Code		#0910		BC-VI MASTER		BE-001481-00-11		